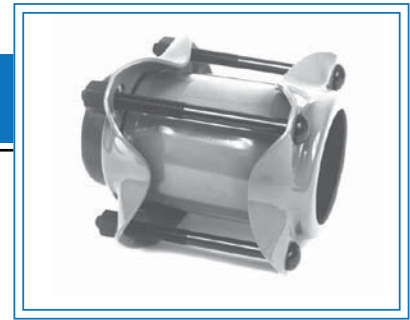


# Style 39 Insulating Couplings

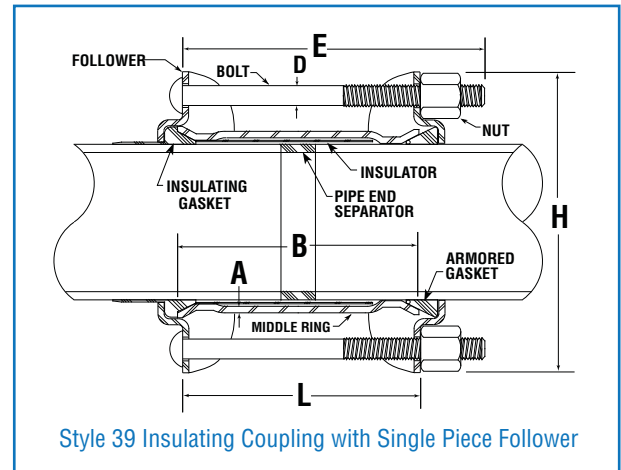


## For insulation and electric isolation

**Dresser Style 39 Insulating Couplings** are widely used on lines which are to be electrically isolated for cathodic protection, or for insulating between pipe of dissimilar metals. The Style 39 coupling follows the same basic design and benefits as the Style 38 coupling, but has insulating properties. The insulating gasket has a skirt which extends under the follower ring to insulate it from the pipe. In addition, a “full boot” plastic tubular insulator inside the middle ring assures isolation of pipe ends. Thus, one pipe end is completely insulated from the coupling and opposite pipe end, while the armored gasket on the other end bonds the coupling to the pipe where it can share cathodic protection currents. Style 39 couplings can be virtually used on all sizes of gas and oil pipelines, and can be supplied with insulating features on both ends if required.

### Materials of Construction

**Followers:** AISI C1012 or ASME SA36  
(Ductile Iron or Malleable Iron for 1/2" thru 1-1/2")  
**Bolts & Nuts:** ANSI A21.11  
**Middle Ring:** ASTM A513, ASTM A635 or ASME SA675 GR60  
**Pipe End Separator & Insulator:** Dresser Spec 100 Plastic  
**Insulating Gasket\*:** Grade 27 Buna S (Armored/Pinned);  
 Grade 41 on Insulating End



## Style 39 Insulating Couplings Sizes and Specifications for Steel Pipe

Pipe Nominal Size (In)	Outside Diameter Inches	Middle Ring Thickness & Length (A&B)	Bolts No./Diam. & Length (D&E)	Approx. Dimensions		Working Pressure Lbs. per Sq. In.	Approx. Shipping Weight (Lbs.)
				Diam. (H)	Length (L)		
3/4	1.050	.120 x 5	2-1/2 x 6-3/4	3-13/16	5-7/8	150	3
1	1.315	.134 x 5	2-1/2 x 6-3/4	4-1/16	5-7/8	150	4
1-1/4	1.660	.140 x 5	2-1/2 x 6-3/4	4-7/16	5-7/8	150	4
1-1/2	1.900	.138 x 5	2-1/2 x 6-3/4	4-3/4	5-7/8	150	5
2	2.375	.154 x 7	3-5/8 x 10-3/4	6-1/4	9	150	12
3	3.500	.156 x 7	4-5/8 x 8-1/4	8	9	350	17
4	4.500	.188 x 7	4-5/8 x 8-1/4	9	9	350	21
6	6.625	1/4 x 7	6-5/8 x 8-1/4	11-1/4	9	900	29
8	8.625	1/4 x 7	6-5/8 x 8-1/4	13-1/4	9	750	36
10	10.750	1/4 x 7	8-5/8 x 8-1/4	14-5/8	8-7/8	600	44
12	12.750	1/4 x 7	8-5/8 x 8-1/4	14-5/8	8-7/8	550	53
14	14.000	3/8 x 7	8-5/8 x 10-3/4	14-5/8	8-7/8	550	82
16	16.000	3/8 x 7	8-5/8 x 10-3/4	14-5/8	8-7/8	450	98
18	18.000	3/8 x 7	8-5/8 x 10-3/4	14-5/8	8-7/8	400	111
20	20.000	3/8 x 7	8-5/8 x 10-3/4	14-5/8	8-7/8	300	122
24	24.000	3/8 x 7	8-5/8 x 10-3/4	14-5/8	8-7/8	300	153

\*NOTE: Gaskets - Above specifications include Armored Gaskets on conductive end.